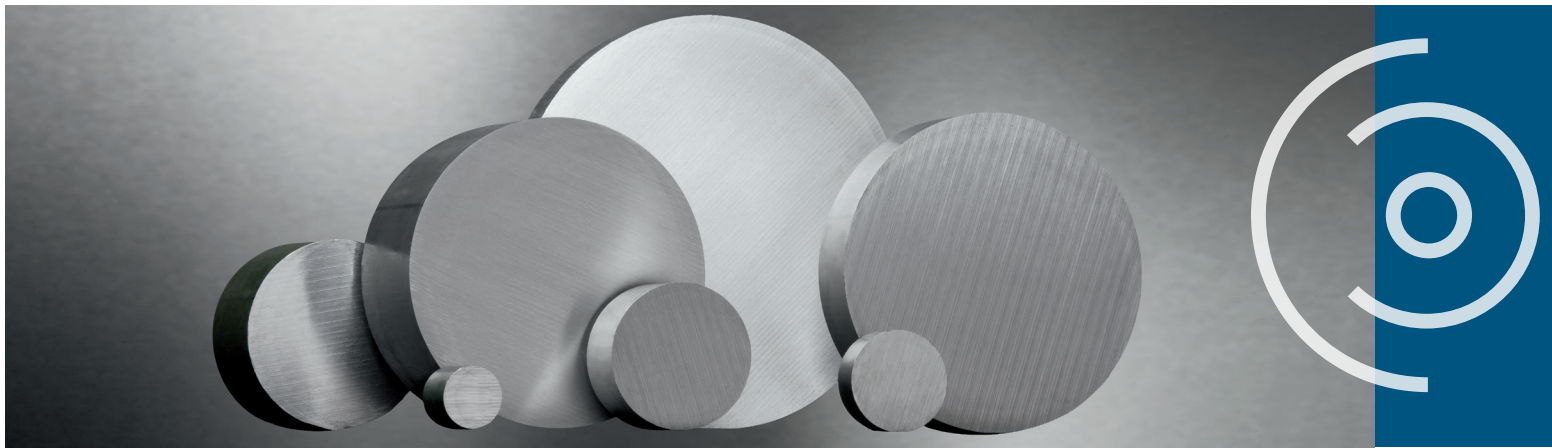


# ALUMINUM ROUND BARS

Round bars used in the production of machined and milled parts as well as roller bases complement the extensive product portfolio of INOMETA. If required, various dimensions and alloys can be supplied.



## ALLOY

- EN AW 2007, AlCuMgPb
- tensile strength  $R_m \geq 330$  MPa  
(Drilling and turning quality, very easy to machine)
  
- EN AW-6082, AlMgSi I
- tensile strength  $R_m \geq 270$  MPa  
(weldable, good anodization)
  
- EN AW-7075, AlZnMgCu I,5
- tensile strength  $R_m \geq 470$  MPa  
(high tensile strength)

## STANDARD

- acc. DIN EN 754-1,2,3,9
- acc. DIN EN 755-1,2,3,9

## SAWING

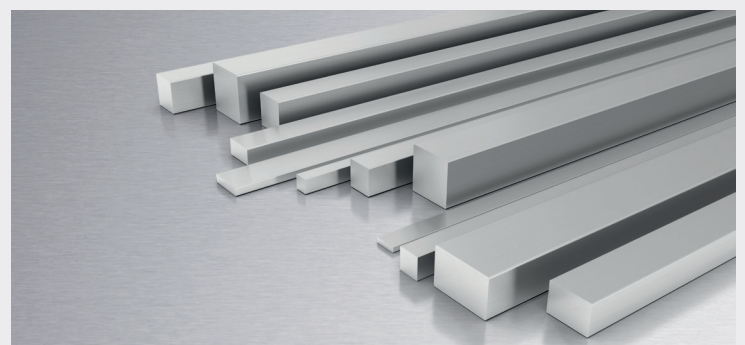
- to fixed lengths, burr-free, with narrow tolerances

## OTHERS

In our high-bay warehouse with integrated  
Sawing center store over 600 tons of aluminum tubes  
and profiles

## OTHER VERSIONS ON REQUEST

- rectangular
- square
- hexagonal



Stand: 01/2018

## ALUMINUM ROUND BARS – DIMENSIONS

INOMETA's round bars made of aluminum are available in the following alloys:

D	kg/m	AlCuMgPb 2007	AlMgSi 1 6082	AlZnMgCu 1,5 7075
25,00	1,3	•		
30,00	1,9	•		
32,00	2,2			
40,00	3,4	•		
45,00	4,3	•		
50,00	5,3	•		
55,00	6,4	•		
60,00	7,6	•		
65,00	9,0	•		
70,00	10,4	•		
75,00	11,9	•		
80,00	13,6	•		
85,00	15,3	•		
90,00	17,2	•		
95,00	19,1	•		
100,00	21,2	•		
105,00	23,4			
110,00	25,7	•		
115,00	28,0	•		
120,00	30,5	•		
130,00	35,8	•		
135,00	38,6	•		
140,00	41,6	•		
150,00	47,7	•		
160,00	54,3	•		
170,00	61,3	•		
180,00	68,7	•		
190,00	76,6	•		
200,00	84,8	•		
210,00	93,5	•		
220,00	102,6	•		
230,00	112,2	•		
240,00	122,1	•		
250,00	132,5	•		
260,00	143,4	•		
270,00	154,6	•		
280,00	166,3	•		
300,00	190,9	(•)		
320,00	217,1	(•)		
330,00	230,9	(•)		
350,00	259,8	(•)		
400,00	339,3	(•)		

D = external diameter in mm

Further dimensions on demand.

(•) = not on stock

kg/m = average meter weight (rounded)

Further dimensions on demand.