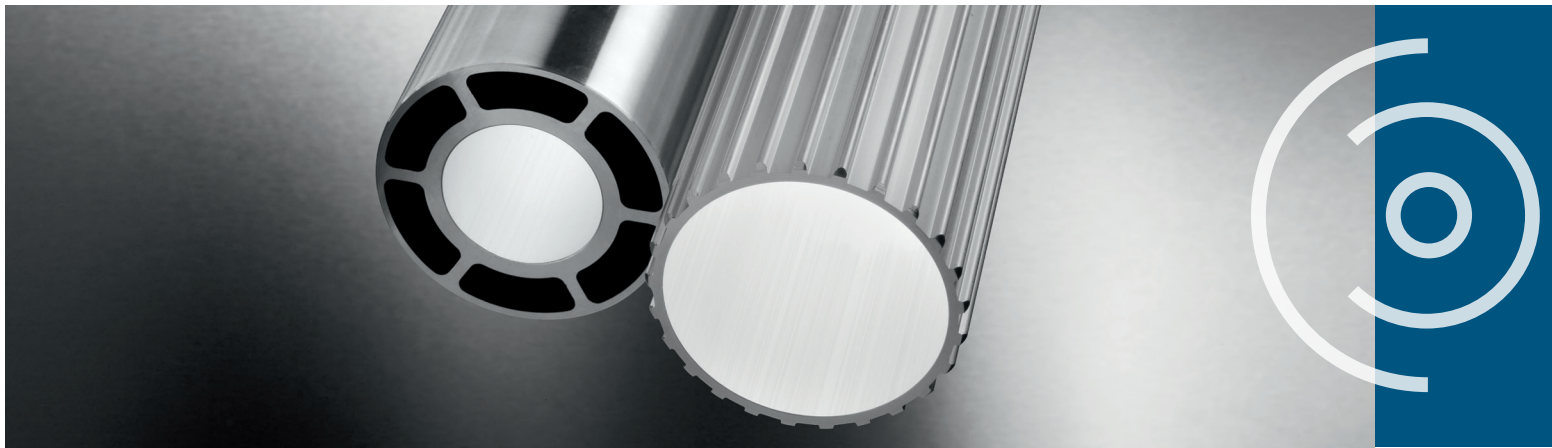


BRIDGE- / PROFILE TUBES

Frame pipes with a double wall (SR) and profile pipes with an outer contour (PR) in standardized versions are always in stock. If the desired geometry is not listed, we offer like an individual solution.



ALLOY

- EN AW-6060/ 6063
- warm-hardened
- tensile strength $R_m \geq 215$ MPa

PRODUCTION PROCESS

- hot extruded via chamber mould calibrated

SAWING

- to fixed lengths, burr-free, with narrow tolerances

SR FIXED LENGTH

- $OD \leq 160$ mm 0,6 mm/m

STRAIGHTENING FIXED LENGTH

- concentric accuracy down to 0.20 mm/m

GRINDING (BT)

- centerless grinding

SURFACE REFINEMENT

- anodizing
- hard-anodizing
- PROTEK®
- others on demand

PROCESSED

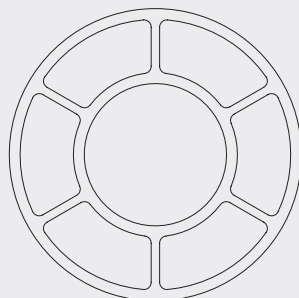
- machining according to drawing

OTHERS

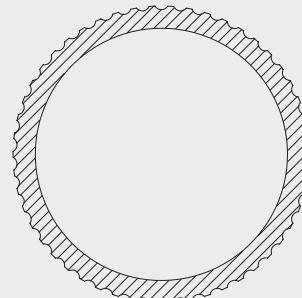
In our high-bay warehouse with integrated Sawing center store over 600 tons of aluminum tubes and profiles

CHARACTERISTICS

- suitable for hard-anodizing
- good machinability
- low residual stress
- corrosion-resistant
- little imbalance
- tight diameter tolerance
- high concentricity accuracy

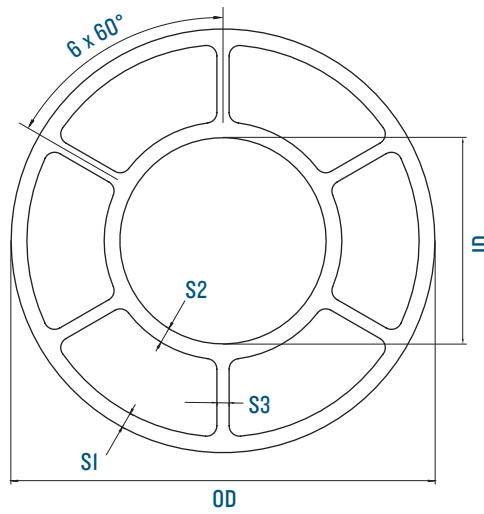


(SR)=bridge tube



(PR)= profile tube

Stand: II/2020



	80	100	120	160
OD [mm]	81,5	101,2	121,2	160,0
tolerance	+/- 0,20	+/- 0,25	+/- 0,30	+/- 0,30
ID [mm]	43,5	59,0	59,0	59,5
tolerance ID [mm]	+/- 0,15	+/- 0,15	+/- 0,15	+/- 0,30
S1 [mm]	3,15	4,0	4,5	5,0
S2 [mm]	4,4	4,0	4,5	5,0
S3 [mm]	3,0	3,0	3,5	5,0
weight aprox. [kg/m]	4,6	6,4	8,4	12,9
Moment of inertia Ix [mm ⁴]	919.300	2.070.100	3.869.500	9.808.100
resistance moment Wx [mm ³]	22.560	40.910	63.850	122.600

PR 80

PR 120

PR 200

